

JAMPRO
Environmental
Corporation

ENGINEERING SOLUTIONS FOR A CLEAN AND BETTER ENVIRONMENT

MISSION STATEMENT

TO BE A LEADER IN
ENVIRONMENTAL
ENGINEERING.

OFFERING A DIVERSE
CROSS-SECTION OF TECHNICAL
EXPERTISE AND YEARS OF
PROFESSIONAL EXPERIENCE.

*We pride ourselves in offering 24-hour service.
(7 days a week) to ensure customer satisfaction. Not only do
we believe in the phrase
“whatever it takes to get the job done” – we do it!*



WHO WE ARE

JAMPRO Environmental Corporation

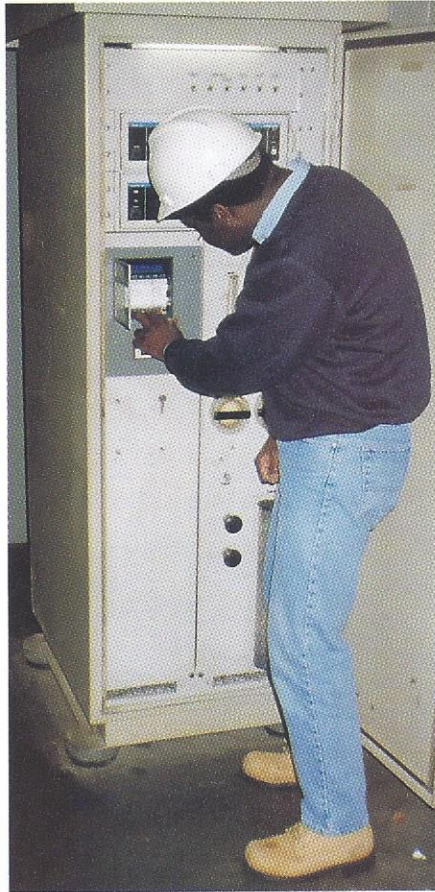
*An Environmental and Engineering Company
that specializes in Air Quality Management.*

AUTOMOTIVE
PHARMACEUTICAL
METAL & MINING
SEWAGE / WASTEWATER
SURFACE FINISHING
WOOD / PULP & PAPER
FURNITURE
ELECTRONIC
CONVERTING
CEMENT
COMPOSITES
METAL DECORATING
COIL COATING
TEXTILE

We provide Environmental
and Engineering services
to a wide variety of
industries:



WHO WE ARE



JAMPRO'S

philosophy is to always aim at exceeding each customer's expectation and putting our customers first. Our company is built on customer satisfaction and we believe that all of our customers and projects should be treated with equal importance.

JAMPRO operates with a diverse cross-section of technical expertise and years of professional experience.

We understand our customers' needs therefore we customize our services to meet their objectives in an efficient and cost effective manner. Because of our diversity and understanding of the customers' particular industry, we are able to stay competitive and at the same time, we accomplish project completion in a timely manner.

WHAT WE DO

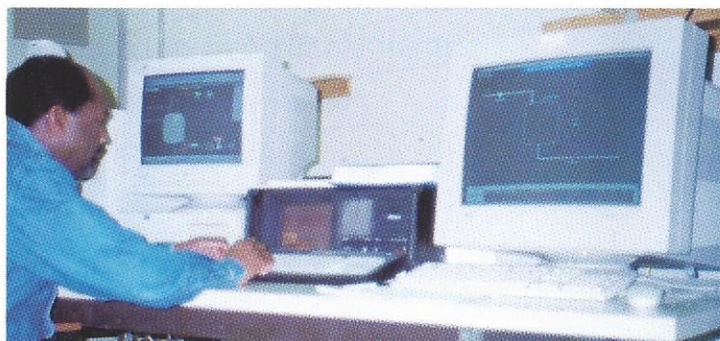
JAMPRO

Offers a wide selection of services to meet your Environmental and Engineering needs.



We provide test programs ranging from single source sampling to multiple simultaneous test locations. JAMPRO determines the most applicable test methods for pollutants as recognized by the regulatory authorities. JAMPRO utilizes historical study data to provide our clients with information needed for critical environmental and engineering decisions.

- SOURCE EMISSIONS TESTING
- PERMANENT TOTAL ENCLOSURES (PTEs)
DESIGN/INSTALLATION/CERTIFICATION
- CONTINUOUS EMISSION MONITORS (CEMS)
SERVICE/CALIBRATION/QUARTERLY AUDITS
- OXIDIZER COMPLIANCE AND
PERFORMANCE TESTING
- PERMITTING
- CAPTURE EFFICIENCY STUDIES
- OXIDIZER START-UP/SERVICE/MAINTENANCE
/INSPECTIONS
- CAPTURE HOOD DESIGN AND INSTALLATION
- ENGINEERING STUDIES
- PROCESS & ANALYTICAL INSTRUMENTATION
CALIBRATION AND CERTIFICATION



SOURCE EMISSIONS TESTING

JAMPRO

Provides its customers with compliance and performance testing required by local and federal regulatory agencies and for internal purposes.



Oxidizer Destruction & Removal Efficiency testing (DRE) related to the New Source Performance Standards (NSPS) and oxidizer performance, specification and guarantee testing for various oxidizer manufacturers to meet vendor performance guarantee and control device optimization.



SOURCE EMISSIONS TESTING

JAMPRO

Provides its customers with compliance and performance testing required by local and federal regulatory agencies and for internal purposes.



Oxidizer Destruction & Removal Efficiency testing (DRE) related to the New Source Performance Standards (NSPS) and oxidizer performance, specification and guarantee testing for various oxidizer manufacturers to meet vendor performance guarantee and control device optimization.

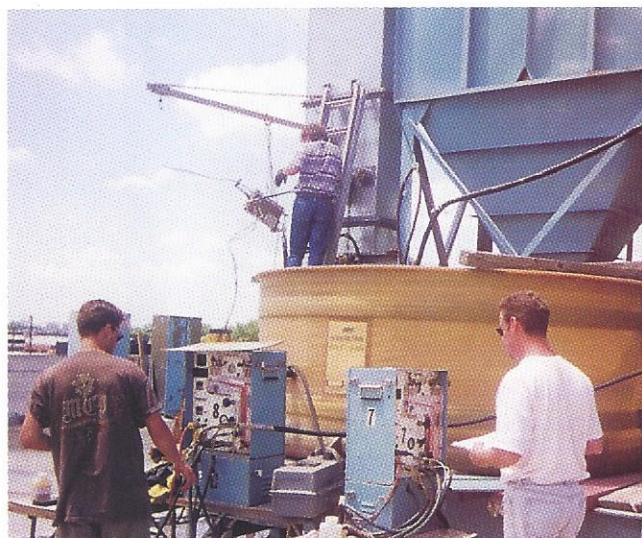


SOURCE EMISSIONS TESTING

Diagnostic testing for process optimization to maximize production and minimize emissions and operating cost.

Source Testing and evaluation utilizing various EPA test methods.

Testing includes determination of :



- CARBON MONOXIDE (CO)
- NITROGEN OXIDE (NO_x)
- SULFUR DIOXIDE (SO₂)
- PARTICULATE EMISSIONS
- MOISTURE CONTENT
- STACK GAS VOLUMETRIC FLOW RATES
- VOLATILE ORGANIC COMPOUNDS (VOC's)
- FORMALDEHYDE EMISSIONS
- OXYGEN (O₂)
- CARBON DIOXIDE (CO₂)

PERMANENT TOTAL ENCLOSURES AND CAPTURE EFFICIENCY DETERMINATION



GAS/GAS WITH A TEMPORARY TOTAL ENCLOSURE (TTE)

LIQUID/GAS WITH (TTE)

LIQUID/GAS MASS BALANCE

JAMPRO

Offers a complete package:

Designing of Permanent Total Enclosures (PTEs)

Engineering and Certification to meet EPA title V requirements.

Designing, Engineering, Installing and Certifying (PTEs) in accordance with EPA guidelines for test method 204.

Conducting Capture Efficiency (CE) tests on existing equipment employing the following approach:

JAMPRO has many years experience in capture efficiency studies for the surface coating and printing industries and various other industries.

C ONTINUOUS EMISSIONS MONITORING (CEM)

J AMPRO

OFFERS:

CONTINUOUS EMISSIONS
MONITORING (CEM)

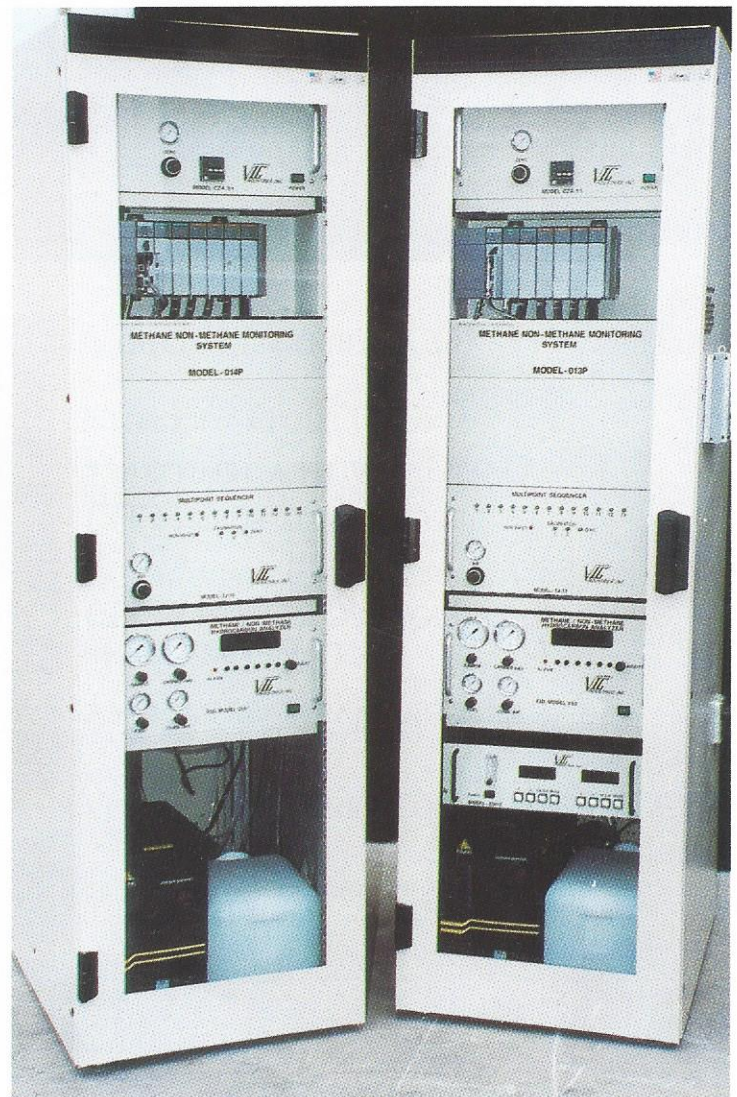
PERFORMANCE SPECIFICATION
TESTING (PST)

PART 60 AND PART 75 RELATIVE
ACCURACY TEST AUDIT (RATA)

CYLINDER GAS AUDITS (CGA)

QUARTERLY SERVICE & CERTIFICATION

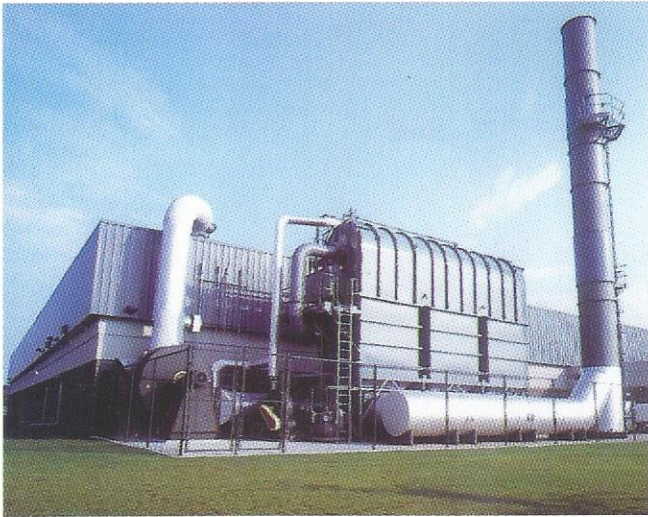
INSTALLATION AND START-UP



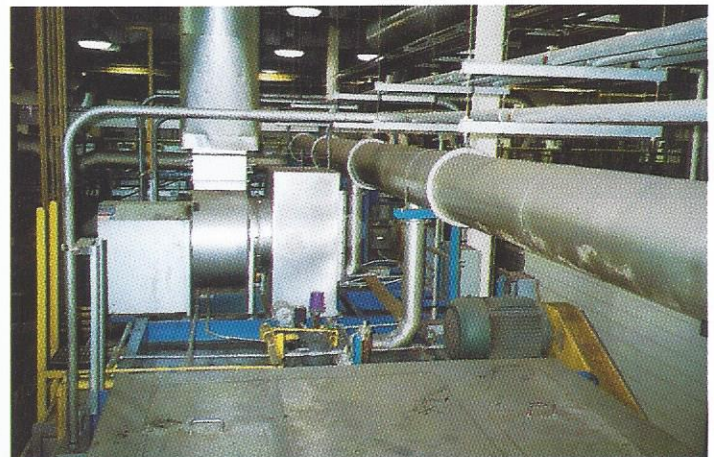
- Installation
- Start-up
- Service
- Maintenance
- Training

THERMAL OXIDIZERS

JAMPRO PROVIDES:



- TECHNICAL CONSULTATION IN THE SELECTION OF THERMAL OXIDIZERS AND OTHER CONTROL DEVICES.
- COMPLETE PROJECT MANAGEMENT FOR THE INSTALLATION AND START-UP OF THERMAL OXIDIZERS.
- ANNUAL INSPECTION, MAINTENANCE AND TESTING CONTRACTS.

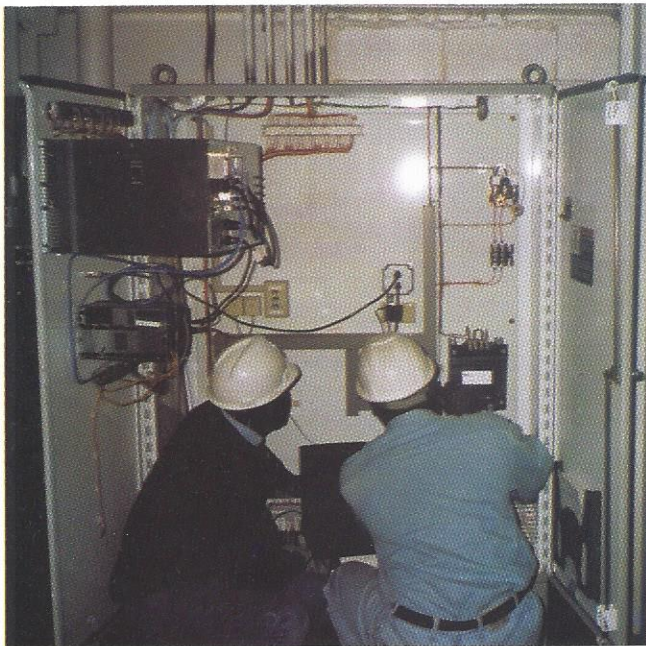


- Duct work design and installation for transporting emissions from the process to thermal oxidizer and other control device.

THERMAL OXIDIZERS

- Installation
- Start-up
- Service
- Maintenance
- Training

INSTRUMENTATION AND PROCESS
CONTROLS DIAGNOSTICS,
CALIBRATIONS, CERTIFICATION
AND SERVICE.



● COST EFFECTIVE PREVENTIVE MAINTENANCE
PROGRAMS FOR THERMAL OXIDIZERS

● THERMAL OXIDIZER INSPECTIONS

● ON-SITE OXIDIZER TRAINING

PERMITTING

JAMPRO PREPARES:

- OPERATING AND CONSTRUCTION PERMITS.
- REVIEW AND MODIFICATION OF EXISTING PERMITS.
- EMISSIONS INVENTORIES TO ASSIST IN THE PREPARATION OF TITLE V PERMIT APPLICATIONS.

CAPTURE SYSTEMS

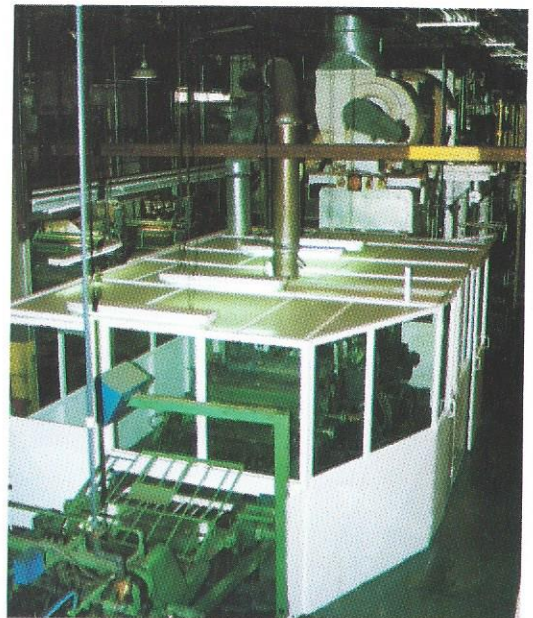
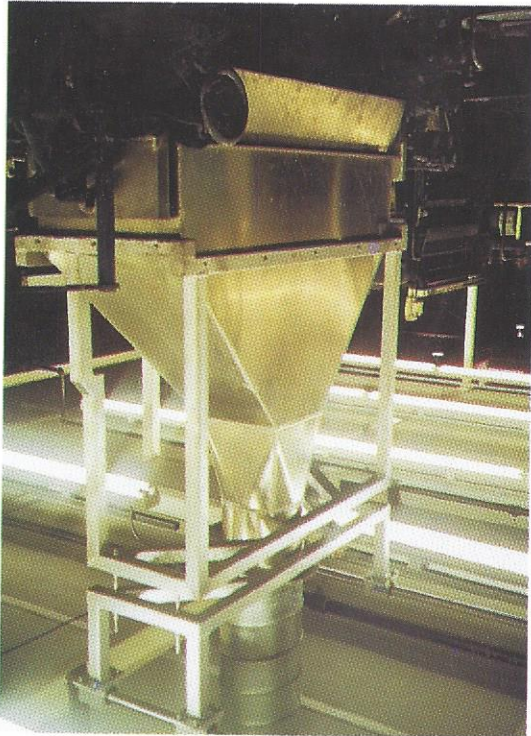
JAMPRO PROVIDES:

Capture systems that are used to keep solvent vapors from becoming fugitive. Our emphasis is placed on developing capture systems that will provide the following:

USE THE MINIMUM AMOUNT OF AIR TO CAPTURE THE MAXIMUM AMOUNT OF VOCs.

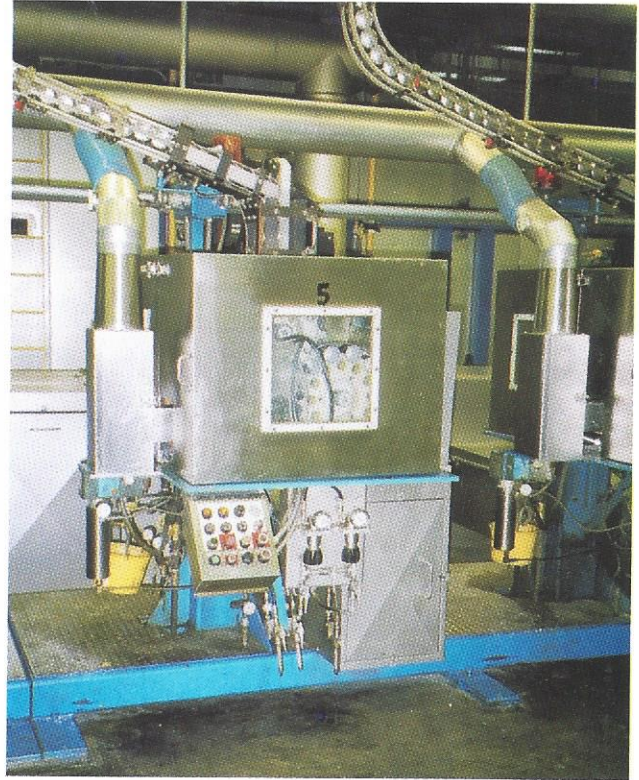
MINIMIZE INTERFERENCE WITH OPERATORS OF THE PRODUCTION EQUIPMENT.

CONTAIN AND CAPTURE THE VOC VAPORS AT THE SOURCE.



ENGINEERING STUDIES

Studies on airflow for printing, surface coating and other applications. These studies focus on the proper air flow movement as it relates to the proper balancing of these processes. Ventilation Systems, Close Capture Hoods, Floor Sweeps Permanent Total Enclosures, Re-Circulation and cascading of existing air flows and Odor Reduction.



Studies of our clients process enable us to develop a cost effective and efficient approach for designing and engineering of Permanent Total Enclosures (PTEs) and close capture hoods, thus improving capture efficiency and odor control in and around the work area.

ENGINEERING STUDIES



- Environmental inspections and audits to ensure compliance and safety criteria.
- Pollution Prevention, including efficiency improvement, treatment of pollution and waste minimization.



Studies to gather information prior to the design and construction of PTEs. This study is highly recommended when determining the size of a thermal oxidizer that will be supplied with emissions from the process.

OTHER SERVICES

JAMPRO

OTHER SERVICES:

PROCESS "BALANCING" AS IT APPLIES TO:

WICKET OVEN

INSIDE BAKE OVENS (IBOs)

PRINTER PIN OVENS

ROTOGRAVURE PRINTING PRESS

CENTRAL IMAGING PRINTING PRESS

REPORT AND PROTOCOL REVIEW

INDEPENDENT AUDIT AND REVIEW OF TEST PROGRAMS CONDUCTED BY OTHER FIRMS.

CUSTOMIZE TRAINING ON THERMAL OXIDIZER AND OTHER CONTROL DEVICES.

JAMPRO conducts studies on Volatile Organic Compounds (VOCs) and capture systems in surface coating, printing operations and other industries. We provide our clients with years of experience in the following:

Fugitive VOCs

Solvents that evaporate into the production room and not pulled into the production equipment are termed “fugitive”. They may have a negative effect on capture efficiency. From a regulatory standpoint, these fugitive emissions eventually escape into the atmosphere and become uncontrolled VOC emissions.

Captured VOCs

Solvents that are pulled into the Production equipment (e.g. oven dryer) and exhausted through the stack are said to have been “captured”. These particular solvent vapors are now controlled and can be exhausted to a VOC reduction device, if necessary.

Consumed VOCs

Solvents that are oxidized/burned, in the process, are generally ignored, although the amount can be significant. For example, some ovens have been found to burn 5% to 10% of the solvent present in the re-circulating air passing through the oven burners. If capture efficiency is determined by a liquid-vapor mass balance procedure, the solvent loss by burning can result in an artificially low efficiency measurement.

Retained VOCs

Solvent that remains in the final product are generally called “retained solvent”. They are in most cases such a small amount that they are frequently ignored when determining capture efficiencies. Exceptions may be found in processes which purposely retain significant amounts of solvent in the product, either to allow future processing, or to provide some characteristic that would be missing in a “bone-dry” product. Still another category may include that in which the solvent chemically combines with or within the product.



For more information please contact us

Courtnie A. Logan / Iman Afari

Director of Environmental Engineering

856.309.2048

Phone

856.309.2052

Fax

jampro@msn.com

E-mail

www.jamproenv.com

Internet

800.980.9566

Emergency Hotline

P.O. Box 767
Clementon, NJ. 08021

Designed by Andre Alexander